

Management Information Reports 2007
Provider Management Information Report

Contents

Contents	2
Introduction.....	3
Section 1: The Local Authorities	4
Graph 1 Looked After Population	4
Graph 2 The Statemented Population.....	5
Section 2: Commissioned Placements	6
Graph 3 Number of LAC CYP in Independent Foster Agency Placements.....	6
Graph 4 Number of New Placements Commissioned in IFA placements in 2007 and still active 04/09/2007	7
Graph 5 Number of LAC CYP in Out of Authority Residential Placements	8
Graph 6: Number of New Placements Made 01/09/07 – 04/09/07 in Out of Authority Residential Provision still Active on 04/09/07.....	9
Graph 7 Number of Statemented CYP in Independent or Non Maintained Special Schools	10
Graph 8 Primary Age Placements in Independent & NMS by the CYP Needs the school is registered to meet.	11
Graph 9 Secondary Age Placements in Independent & NMS by the CYP Needs the school is registered to meet.	12
Section 3: The Range of Costs of Placements.....	13
Graph 10 Weekly Costs for IFA Placements active 04/09/07	14
Graph 11 Weekly Costs for Residential Placements active 04/09/07	15
Graph 12 OFSTED Rating / Cost Comparison	16
Section 4 Young People for whom services have been commissioned.....	16
Section 4 Young People for whom services have been commissioned.....	17
Graph 13 Gender of CYP in Out of Authority Residential Provision	17
Graph 14 Age of CYP in Out of Authority Residential Placements active at 04/09/07	18
Graph 15: Age of CYP in Residential Placements made 01/01/07 – 04/09/07 (Age at Time of Placement).....	19
Graph 16 Age of CYP in IFA placements at 04/09/07	20
Graph 17: Age of CYP in IFA Placements made 01/09/07 – 04/09/07 (Age at Time of Placements)	21
Graph 18 National Curriculum Year at 04/09/07 of CYP placed in Independent and Non-Maintained Special Schools	22
Graph 19: NCY of CYP in new placements made 01/01/07 – 04/09/07 and placements still active on 04/09/07. NCY as at Placement Date	23
Appendix A – Member Authorities of Placements Northwest.....	24

Introduction

Since its inception, Placements Northwest has incorporated collaborative working with providers into its organisational structure through the joint working groups and supporting the establishment of regional provider networks. This Report, which presents information on Out of Authority placements gathered from the member Local Authorities¹, is part of this continuing commitment to joint working.

A key element of the work of PNW has been to develop a better understanding of the commissioning practices through management information. To this end in the autumn of 2007 Placements Northwest undertook a census of the active out of authority placements of the 21 local authorities who are members of PNW. This census covered the placements with independent fostering agencies, residential care², and with independent and non-maintained special schools. This report gathers together some of the information collected as part of this census, while respecting the confidentiality of business information.

The report focuses on the numbers and costs of placements with basic information on CYP characteristics. A further refinement of the range and method of data collection and how to suitably reflect quality of provision will be undertaken before any future census.

A number of the graphs refer to geographical areas of the North West (North, South, East and West) to demonstrate the geographical perspective of the data. Consultation is ongoing with partners to determine how this data can be refined to more accurately demonstrate the varying demands and availability of provision across the region.

An important caveat

The report reflects actual commissioning activity which may or may not reflect the true needs of the CYP. Further analysis is required of these needs though the development of a regional commissioning strategy.

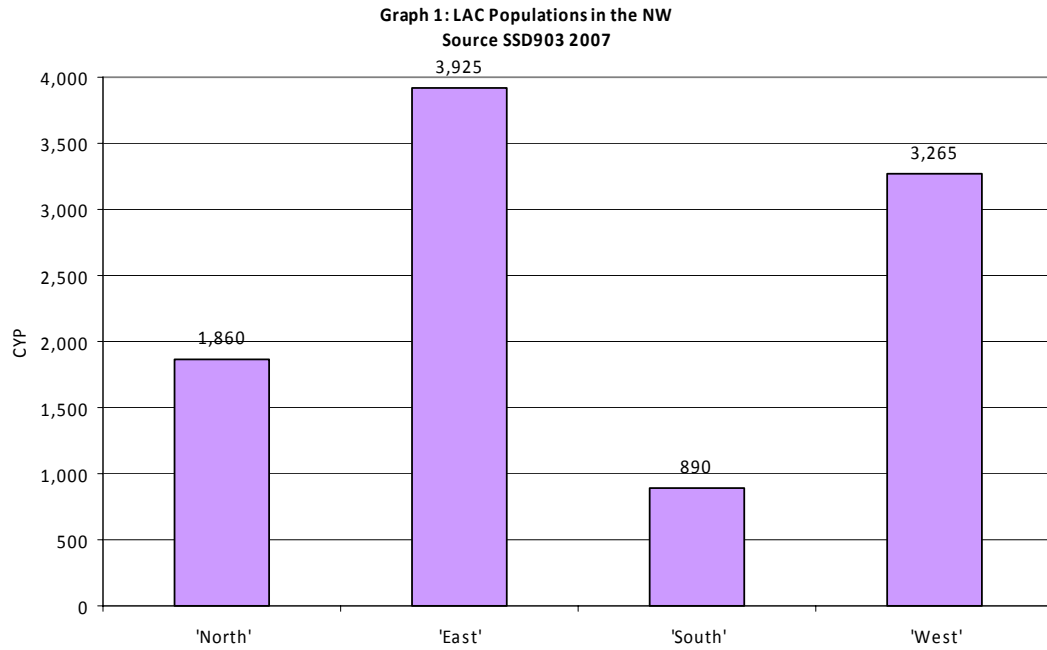
¹ A full list of the members of PNW can be found in Appendix A

² Placements where access to the residential provision is the prerequisite to access the educational provision and a statement of SEN is not essential is considered a residential placement with education. A placement where attendance in the education provision is a prerequisite for access to the residential provision and a statement of SEN is needed is considered a residential education placement

Section 1: The Local Authorities

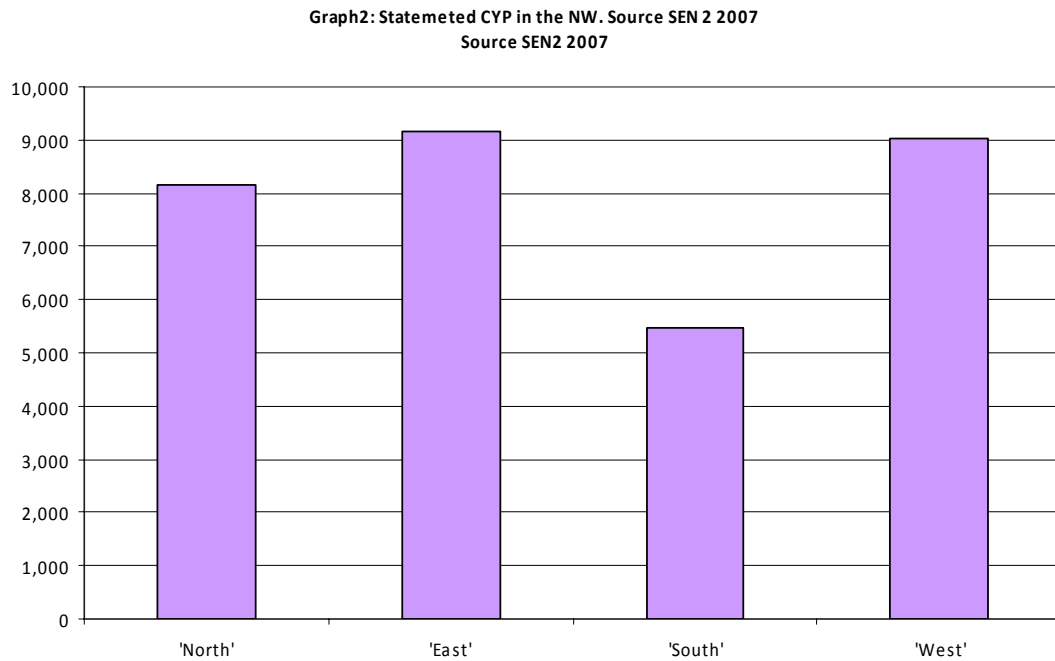
This section gives a brief overview of the local authority populations of LAC and Statemented CYP.

Graph 1 Looked After Population



The graph illustrates the number of LAC CYP in the different areas of the NW. This data has been gathered from the SSD903 which is undertaken by the DCSF.

Graph 2 The Stated Population.

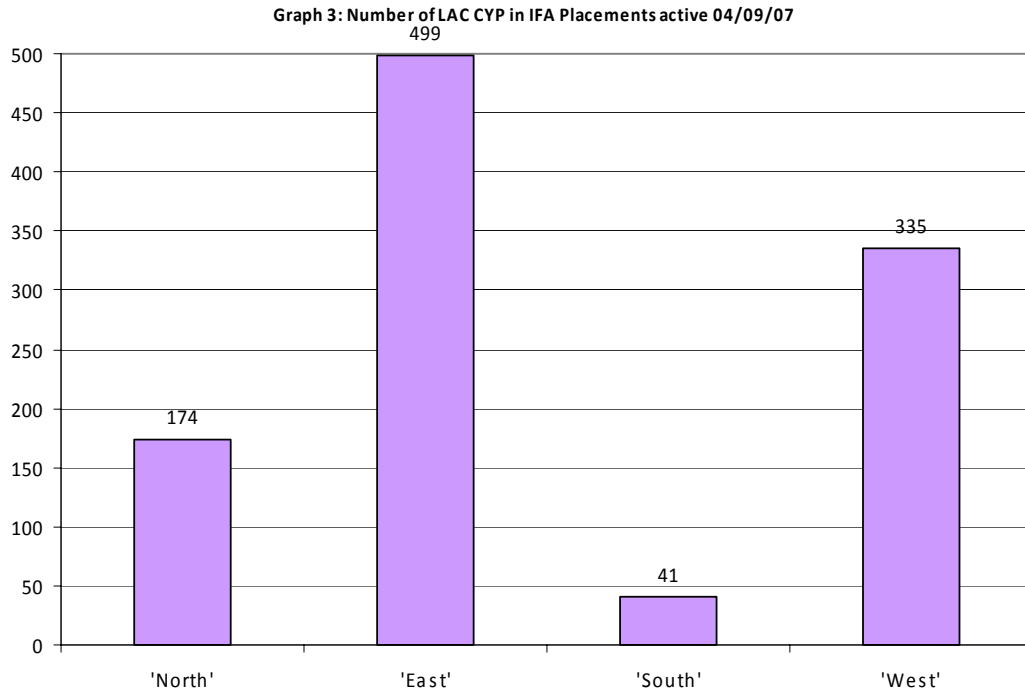


Graph 2 illustrates the number of active statements. This information has been taken from the SEN 2 return on pupils with Statements of Special Educational Needs undertaken by the DCSF.

Section 2: Commissioned Placements

An overview of the numbers of placements commissioned in the region.

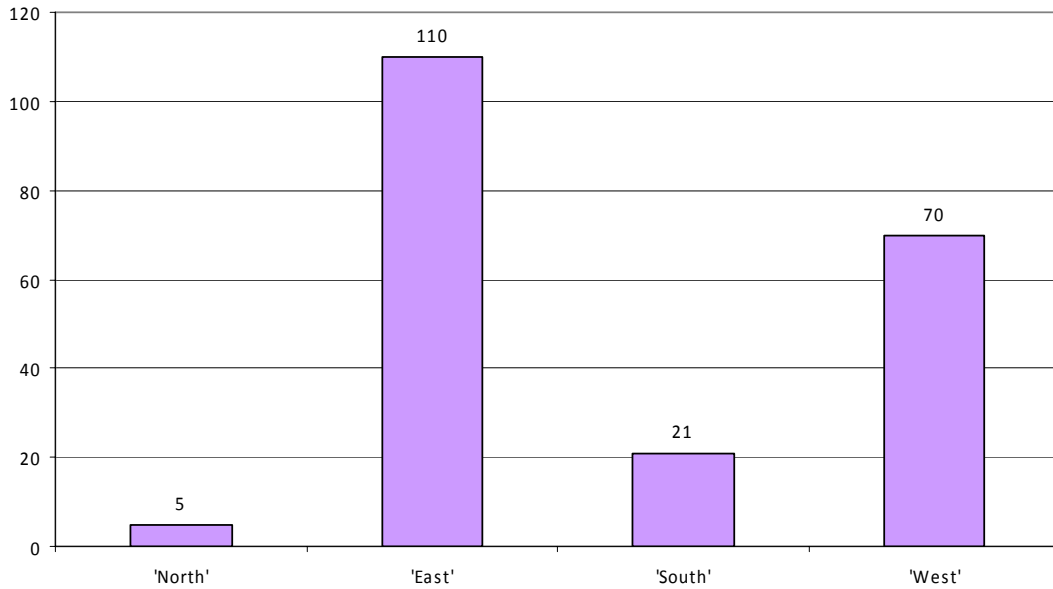
Graph 3 Number of LAC CYP in Independent Foster Agency Placements



Graph 3 illustrates the number of placements the respective LAs had with IFA Providers which active on 04/09/07. This graph shows the significant variation in commissioned fostering placements across the region.

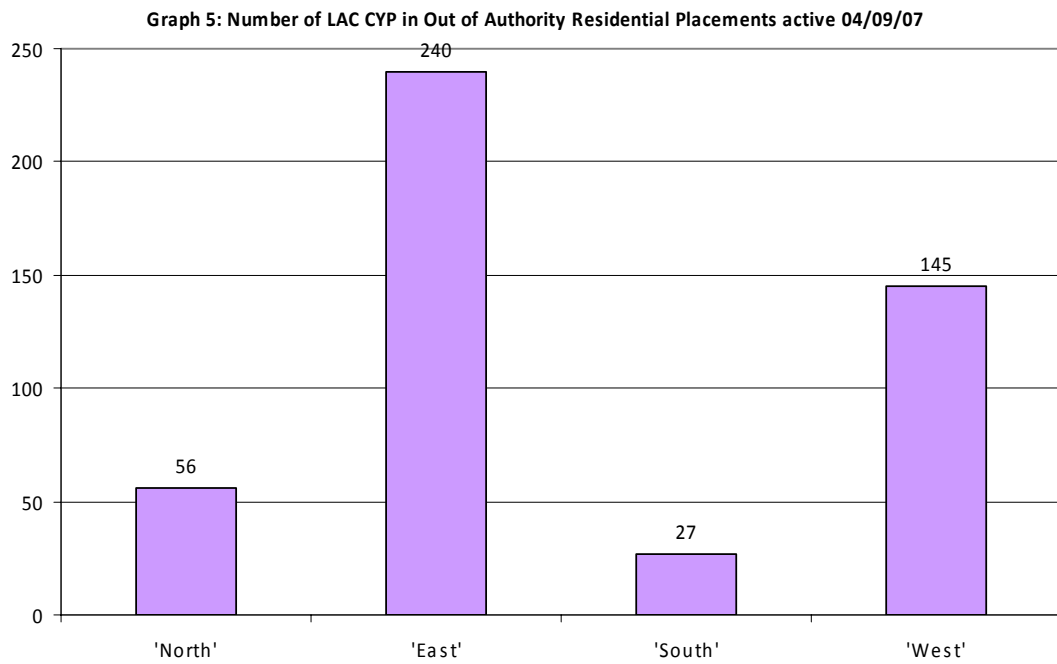
Graph 4 Number of New Placements Commissioned in IFA placements in 2007 and still active 04/09/2007

Graph 4: Number of LAC CYP in IFA Placements commissioned 01/09/09 - 04/09/07 and still active 04/09/07



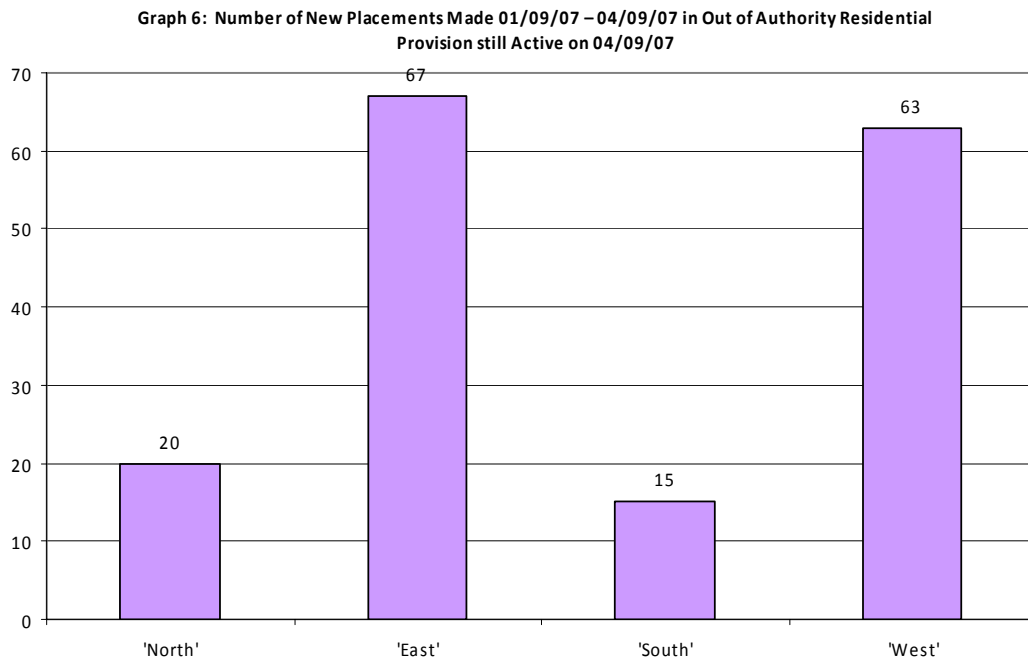
It should be noted that only 18 of the 21 LAs are represented on graph 4, and the results for the North are particularly skewed though omission.

Graph 5 Number of LAC CYP in Out of Authority Residential Placements



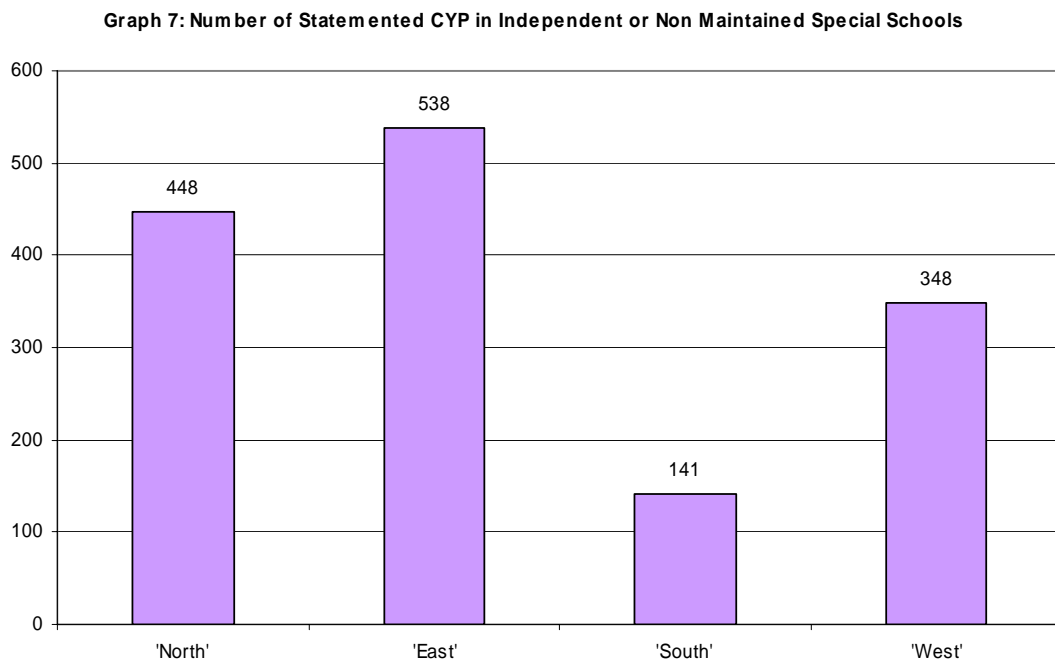
Graph 5 shows the significant variation in the volume of commissioned placements across the region.

Graph 6: Number of New Placements Made 01/09/07 – 04/09/07 in Out of Authority Residential Provision still Active on 04/09/07



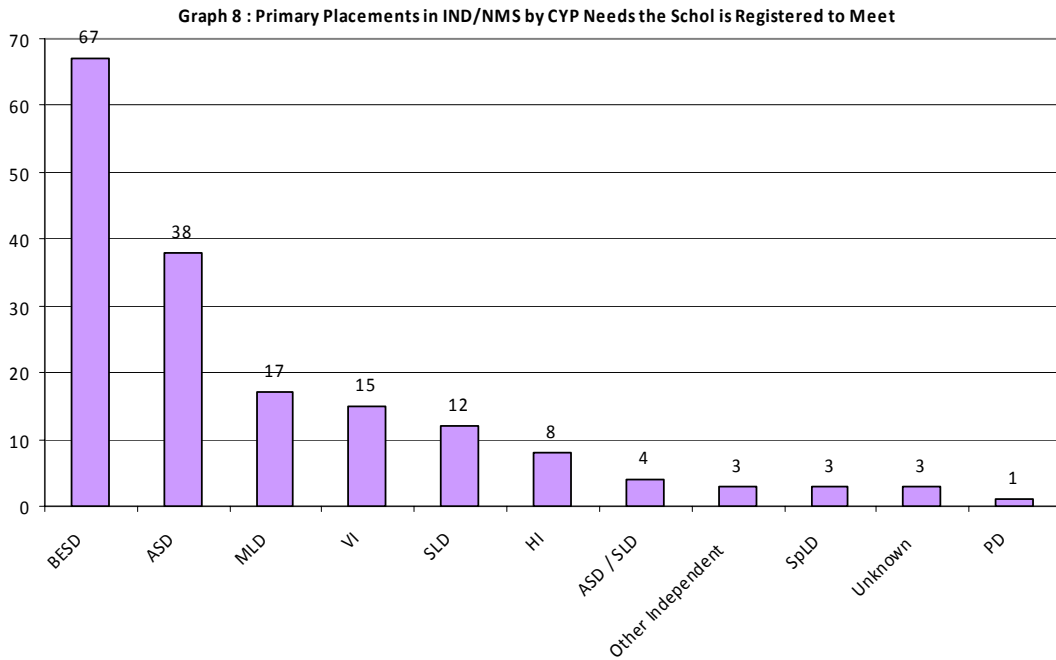
Note that this data only includes information on 18 of the 21 LAs.

Graph 7 Number of Stated CYP in Independent or Non Maintained Special Schools



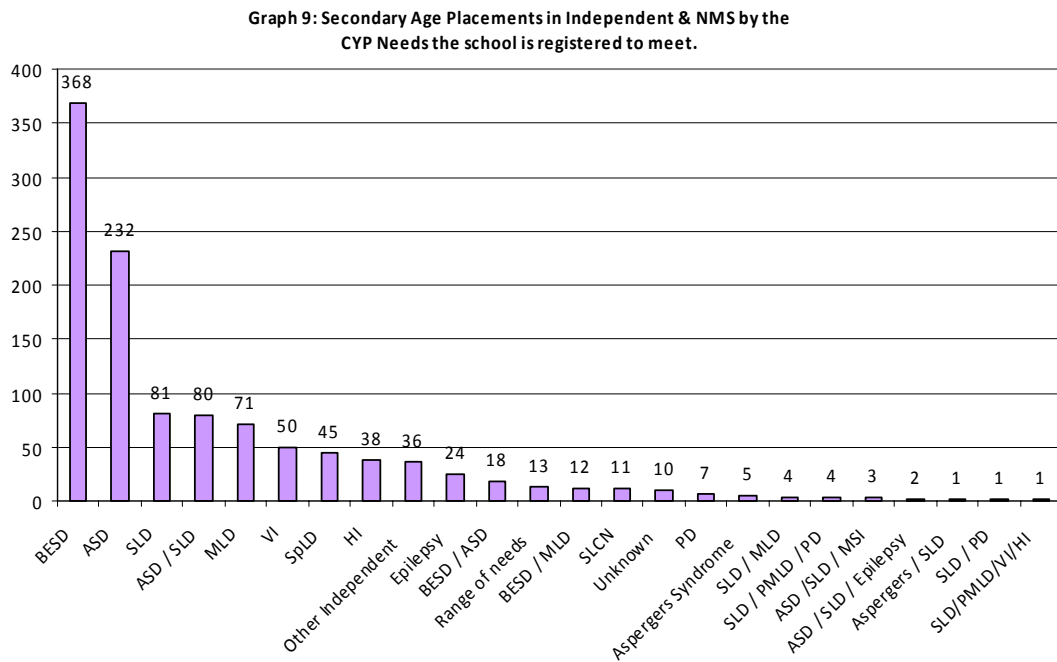
This graph shows the number of places commissioned in Independent and Non-Maintained Special Schools. The data does not distinguish between residential and day placements.

Graph 8 Primary Age Placements in Independent & NMS by the CYP Needs the school is registered to meet.



Graph 8 shows a break down of Primary placements by the registered need of the schools. There are significantly more placements made in provision which is registered as providing for CYP with BESD where more than 5 times more placements are made than in provision registered for SLD. There are also a significant number of placements in provision registered for ASD.

Graph 9 Secondary Age Placements in Independent & NMS by the CYP Needs the school is registered to meet.



One of the noticeable changes with the primary and secondary placements is that there is a much greater proportion of placements in provision registered for SLD or ASD / SLD provision. This may reflect that LAs are more able to meet the needs of these CYP when they are of primary age or it maybe that the difference reflects a change in commissioning practice and the secondary placements are long term, historic, placements.

Section 3: The Range of Costs of Placements

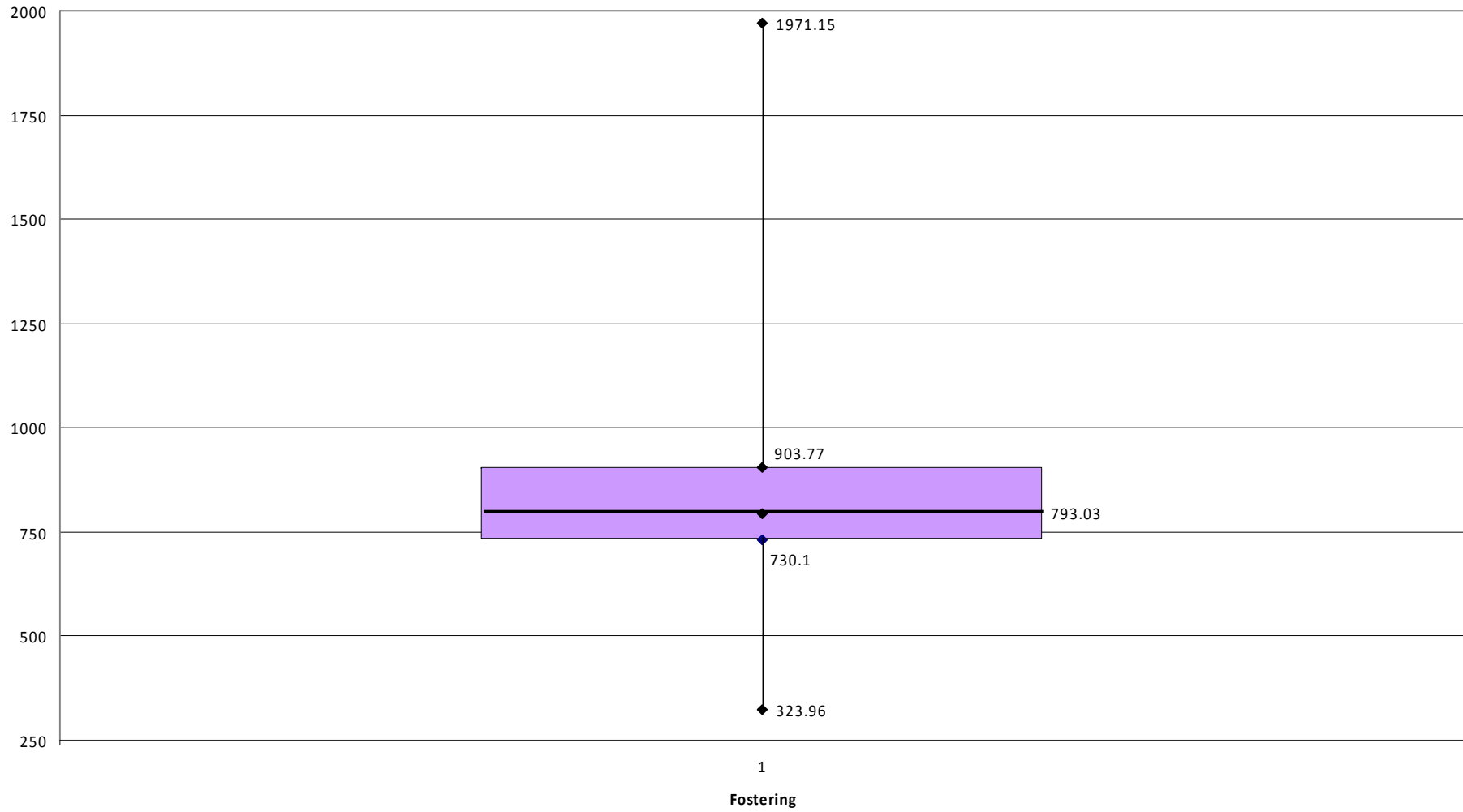
The following graphs illustrate the range of prices which Local Authorities are paying for services they have commissioned. There is also initial findings from the early work being done to compare costs to OFSTED's judgments on quality from OFSTED reports. This has been done from fostering

The data reflects all commissioned placements and makes no attempt to identify placements where enhanced services have been commissioned resulting in higher costs.

The cost data in graphs 10 & 11 is presented as a box and whiskers graph which provides a summary of a set of the costs. The line (whisker) shows the full range of data i.e. where every result in a selected cohort lies. The box represents the inter-quartile range of the results – the range in which half the results lie. The line above and below the box both represent a quarter of the results each. The median, the point at which half the results lie above and half below, is represented with a black line in the body of the box.

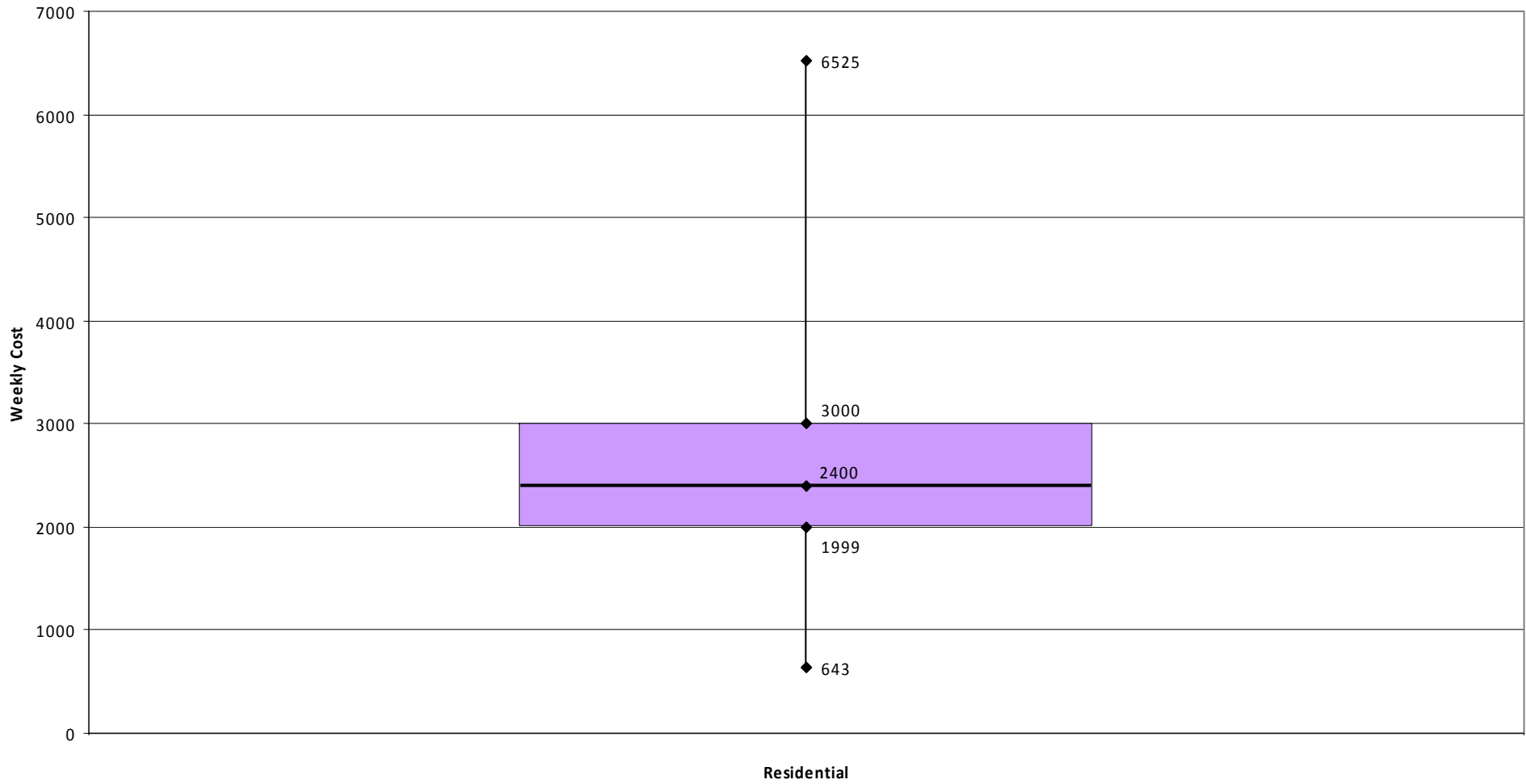
Graph 10 Weekly Costs for IFA Placements active 04/09/07

Graph 10 Weekly Costs for IFA Placements Active on 04/09/07



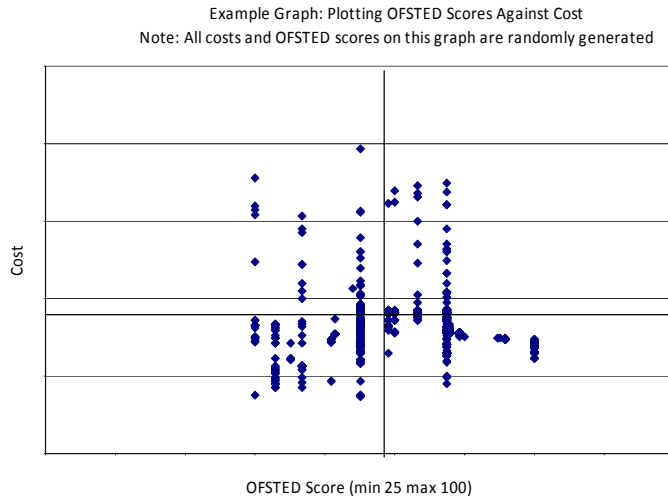
Graph 11 Weekly Costs for Residential Placements active 04/09/07

Graph 11: Weekly Cost of Placements Active 04/09/07



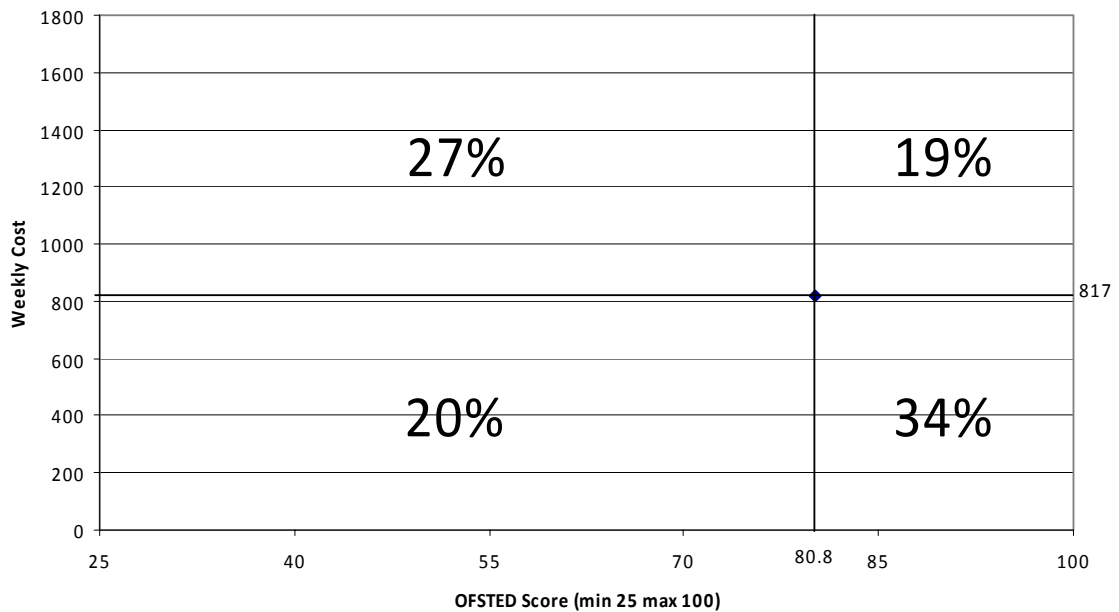
Graph 12 OFSTED Rating / Cost Comparison

The data graph 12 has been obtained by comparing weekly costs of placements to the OFSTED report scores of provision. This information was plotted on a graph as shown in the following example (NB this is an example with fictional data);



The lines marked on the graph represent the average weekly cost and average OFSTED score for placements active on 04/09/07. A detailed graph like the example above will not be circulated as it may be possible to identify individual providers and costs. However in Graph 12 we have marked the proportion of placements which fell in each quadrant.

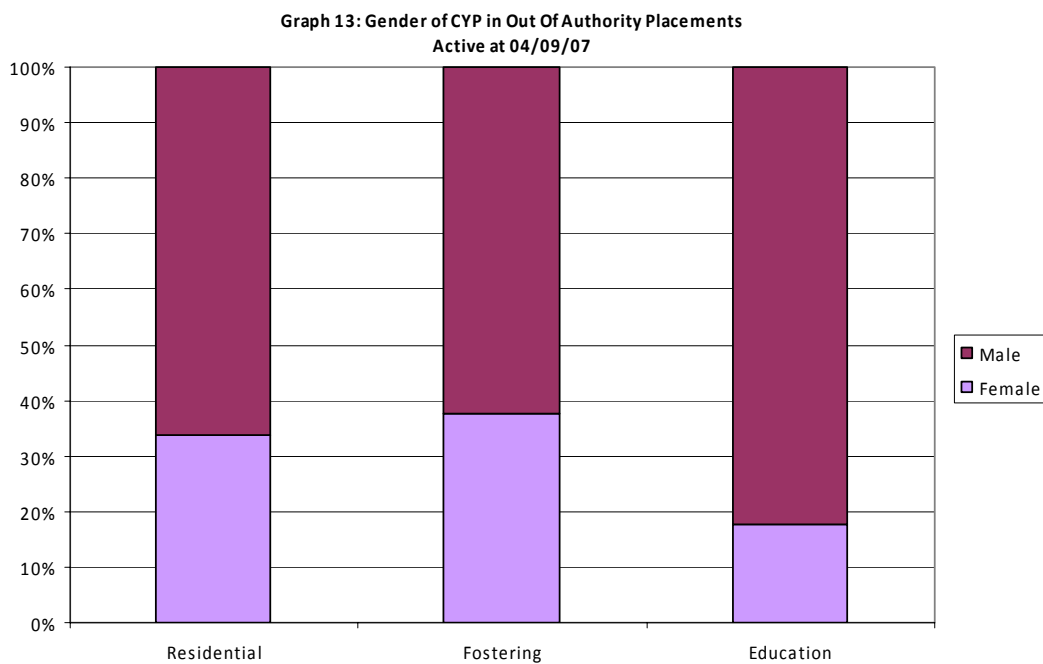
Graph 12: Summary of OFSTED Score / Cost information for IFA Placements Active 04/09/07



Section 4 Young People for whom services have been commissioned

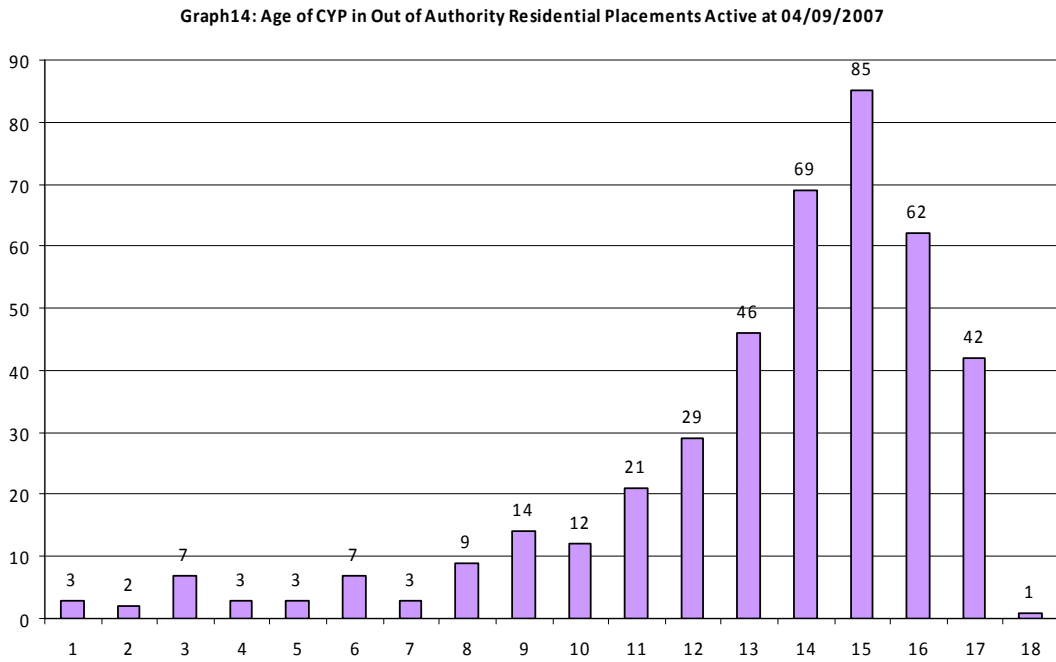
This section covers the data we have collected on the CYP for whom out of authority placements have been commissioned. It is important to remember that this shows commissioned placements it does not necessarily reflect *demand*. There may be significant areas of unmet need not reflected in this data or the data may be skewed by a significant number of long standing placements.

Graph 13 Gender of CYP in Out of Authority Residential Provision



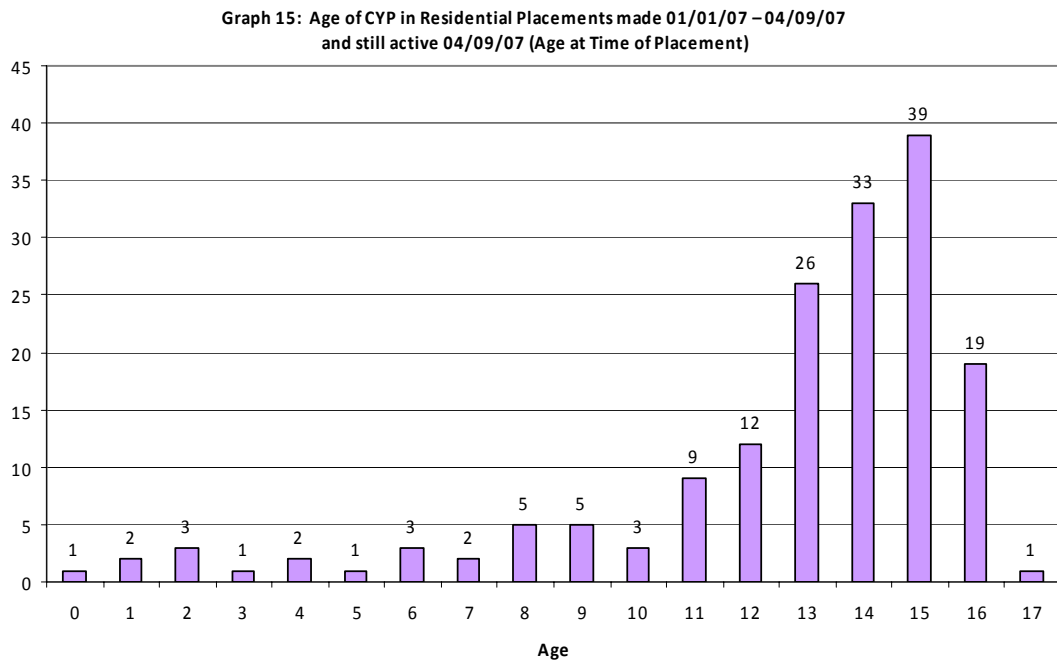
Across the region there are more males placed out of authority, with 66% of the total placements. It would be expected that there was a greater percentage of placements for males, as the SSD03 national return reports that LAC CYP 44% are females. We can note however that there are 10% more placements for males than we would anticipate given the information in the SSD03.

Graph 14 Age of CYP in Out of Authority Residential Placements active at 04/09/07



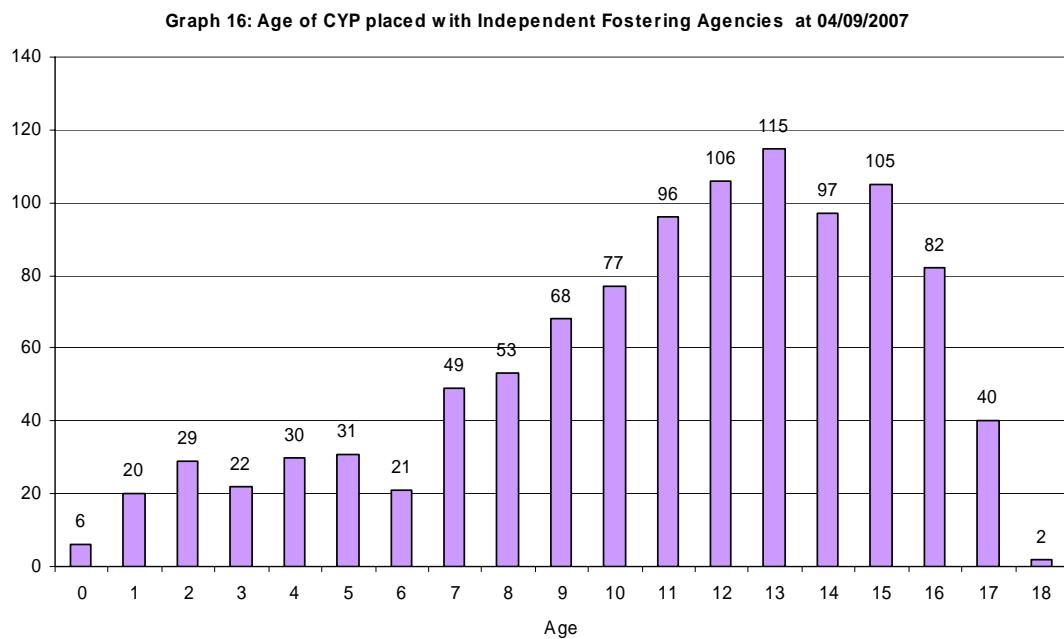
Graph 14 shows the age of CYP at 04/09/07 who are placed in out of authority residential provision. There are considerably more CYP placed in out of authority residential provision in their teens. Fifty one percent of the placements are for CYP aged 14-16.

**Graph 15: Age of CYP in Residential Placements made 01/01/07 – 04/09/07
(Age at Time of Placement)**



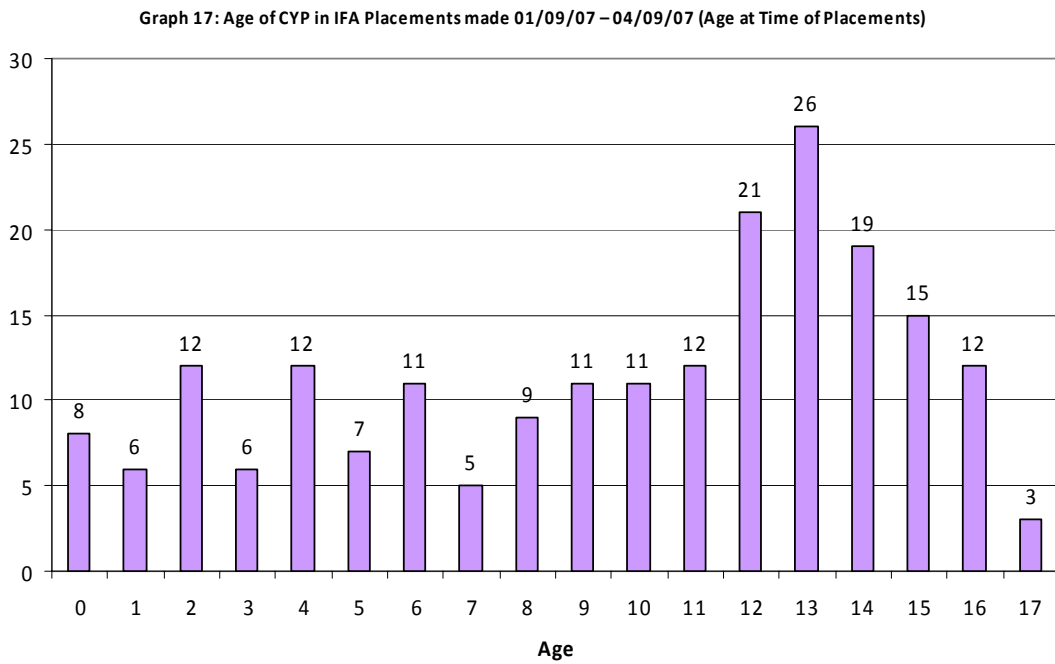
It should be noted that only 18 of the 21 LAs placements are recorded on this graph. Sixty percent of the new placements recorded by the LAs were for CYP aged 13-16 at the age of placement.

Graph 16 Age of CYP in IFA placements at 04/09/07



Graph 16 shows the age of CYP placed with IFA as at 04.09.07. There are a sudden increase in the number of placements for CYP aged 7 and the number of purchased placements increase steadily until the age of 13 after which we see numbers decline.

Graph 17: Age of CYP in IFA Placements made 01/09/07 – 04/09/07 (Age at Time of Placements)

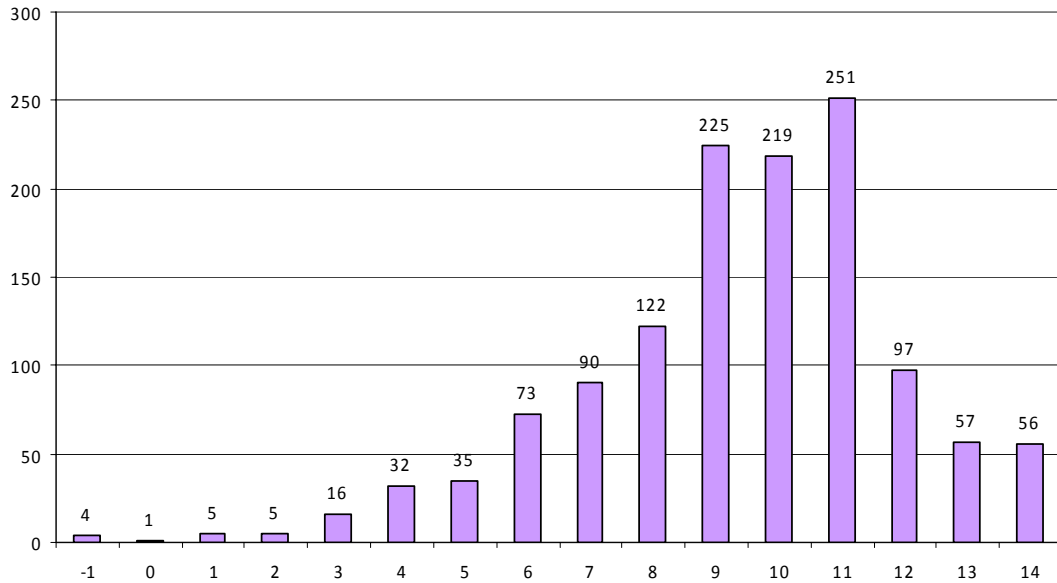


It should be noted that graph 17 only shows data for 18 of the 21 LAs.

The age of CYP in new fostering placements show greater variety than for residential placements as illustrated in graph 17. We can note that 33% of new placements are for CYP 13-16 (in comparison to 60% for residential). The greatest number of new placements are for 13 year olds.

Graph 18 National Curriculum Year at 04/09/07 of CYP placed in Independent and Non-Maintained Special Schools

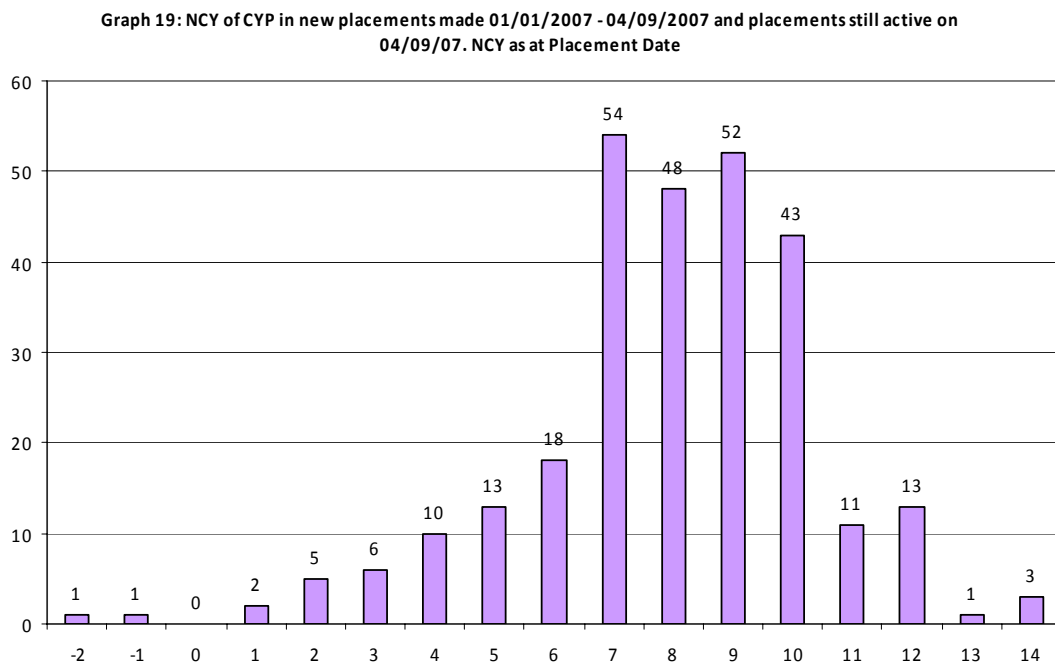
Graph 18: National Curriculum Year at 04/09/07 of CYP placed Independent and Non-Maintained Out of Authority Placements



Graph 18 shows the National Curriculum Years of placements made by the North West LAs. We can note that there is a one third increase in placements for CYP in Year 9 compared to Year 8. There is more than double the number placed in Year 6 compared to Year 5 and a three fold increase from Year 2 to 3.

The majority (70%) of out of authority education placements are for secondary aged CYP. 50% of the total placements are for CYP in years 9, 10 and 11.

Graph 19: NCY of CYP in new placements made 01/01/07 – 04/09/07 and placements still active on 04/09/07. NCY as at Placement Date



Graph 16 shows CYP who had active placements on 04/09/2007 and had placements made between 01/01/2007 – 04/09/2007. The NCY shown is the year group of the young person when the placement was made.

The largest number of new placements, as maybe expected, was in Y7 when CYP move to secondary provision. 74% of new placements were for CYP were in secondary provision, with Year 9 having the next greatest number after Y7. It is interesting to note that 11 CYP had a new placement in year 11 which is their final year of compulsory education.

Appendix A – Member Authorities of Placements Northwest.

Blackburn with Darwen Council
Blackpool Council
Bolton Metropolitan Borough Council
Bury Metropolitan Borough Council
Cheshire Council
Halton Borough Council
Knowsley Metropolitan Borough Council
Lancashire County Council
Liverpool City Council
Manchester City Council
Oldham Metropolitan Borough Council
Rochdale Metropolitan Borough Council
Salford City Council
Sefton Council
St Helens Council
Stockport Metropolitan Borough Council
Tameside Metropolitan Borough Council
Trafford Council
Warrington Borough Council
Wigan Metropolitan Borough Council
Wirral Metropolitan Borough Council